

# Product specifications



## Y-10

- THE MOST POWERFUL 3-WAY SUB-COMPACT LINE ARRAY
- FOR USE IN 3- or 4-WAY SYSTEMS
- PRECISE ANGULAR CONTROL
- HIGH SPL
- MORE VERSATILE & SCALABLE



The Adamson Y10 is the highest fidelity sub-compact 3-way line array available in the market today, and fulfils a need for a more versatile and scalable full-powered line array.

At only 10.5" high, the Y10 is almost half the size of other 3-way line arrays yet it has more than half the SPL of the larger enclosures - meaning two Y10s give you more SPL than a single large 3-way line array enclosure.



Employing a proprietary Adamson *Co-linear Technology* sound chamber, the Y-Axis series (Y10 and Y18) are the only line arrays that can create curved iso-phase sound sources in the high and mid frequency sections - delivering a single uniform wavefront of mid and high frequency sound. Mid lobing, comb filtering and time-smear are virtually eliminated, giving the Adamson Y-Axis line array unrivaled far field sonic accuracy.

When coupled with the Adamson Y10 Sub (with dual 18" drivers), the Y10 can go from the smallest venue to a large rock festival and provides a versatile, high-powered complement to the Y18 or any full-sized line array. To ensure complete Y-Axis series compatibility, the Y10 and Y18 use the same rigging system.

# technical specifications

## Y-10



### KEVLAR TECHNOLOGY

The Y10 is a powerful sub-compact 3-way line array featuring a single patented Adamson mid/high drive module. The Adamson drive module has a co-axial entrance and a co-linear exit comprised of a high frequency sound chamber mounted within a mid frequency sound chamber. The drive module is powered by a proprietary 9" Kevlar mid and a JBL 2451 compression driver. Together, the drive module and trapezoidal cabinet design create a smooth, slightly curved, seamless wave front with no gaps between cabinets. The Y10 has a defined coverage pattern of 90 degrees (-3dB) - 100 degrees (-6dB) by 5 degrees. The vertical coverage is determined by the number of cabinets added to the array.

The Y10 comes complete with a sliding hinge rigging system that is fast and efficient. With six full degree increments, you can achieve precise angular positioning by adjusting the extension of the sliding hinge while the front of the array remains closed. Light, durable aluminum dollies and all the components for rigging the Y-Axis come standard. Aluminum rigging frames to support 16 or 24 Y-Axis are available as optional accessories.

### APPLICATIONS

- Live Concert Reproduction
- Theaters
- Houses of Worship
- Large Clubs
- Down fill for Y18
- Center cluster

### FEATURES

- Adamson Co-Linear Drive Module
- Two Adamson ND10-L 10 Kevlar Neodymium LF Drivers
- One Adamson YX9 9" Kevlar MF Driver
- One JBL 2451 HF Driver
- Aluminum Dolly Board
- Proprietary Stainless/Aluminum Slide Hinge Rigging

### PRODUCT DATA

Dimensions & Weight	
Height (cm)	10.5" (26.7)
Width (cm)	42.75" (108.6)
Depth (cm)	24.5" (62.3)
Weight (kg)	126 lbs (57.2)
Dolly (kg)	35 lbs (15.9)
Finish	Black Dual Component Polyurethane Resin
Rigging	Stainless/Aluminum Slide Hinge Rigging
Cabinet Construction	Rugged 11-ply Baltic Birch
Accessories	Slide Hinge Rigging; Aluminum Dolly
Optional Accessories	Aluminum Rigging Frame; Nylon Cordura Cover

### TECHNICAL DATA

Frequency Response (+/-3dB) with Full Range Preset	60 Hz – 18 kHz
Frequency Range with Xover Preset	90 Hz – 18 kHz
Maximum SPL (Continuous) with Preset Xover mode	133.6dB (138.5dB / 2 units)
with Preset Full Range	133.8dB (138.7dB / 2 units)
Maximum SPL (Peak) with Preset Xover mode	139.6dB (144.5dB / 2 units)
with Preset Full Range	133.8dB (144.7dB / 2 units)
Sensitivity (2.83V @ 1m)	LF 99dB (105dB / 2 units) MF 104dB (110dB / 2 units) HF 112dB (116dB / 2 units)
Directivity	Horizontal 100° @ -6dB / 90° @ -3dB Vertical (one enclosure) 5° (prolate-spheroidal horn) Vertical (several enclosures) defined by the array
LF Section (Impedance)	2 x ND10-L 10" Kevlar, Neodymium Low Frequency Drivers (2 x 16 ohms)
MF Section (Impedance)	YX9 9" Kevlar Driver (8 ohms)
HF Section (Impedance)	JBL 2451 (8 ohms)
Power Handling (Watts RMS)	LF 300 (2) LF Peak 600 (2) MF 350 (1) MF Peak 700 (1) HF 75 (1) HF Peak 150 (1)
Connection	Neutrik Speakon™ NL8
Electronic Processing	Settings available for XTA DP224, XTA DP226, BSS 366

Specifications Are Subject To Change Without Notice



Adamson Systems Engineering Inc.  
1401 Scugog Line 6, Port Perry, ON L9L 1B2  
T: [905] 982 0520 F: [905] 982 0609  
www.adamsonproaudio.com  
sales@adamsonproaudio.com

ZAC Euro Moselle Sud  
2 Rue de la Gillière  
FRANCE - 57140 Norroy-Le-Veneur  
Tel : +33 (0)387 30 00 00  
www.dv2-audio.com  
dv2@dv2-audio.com

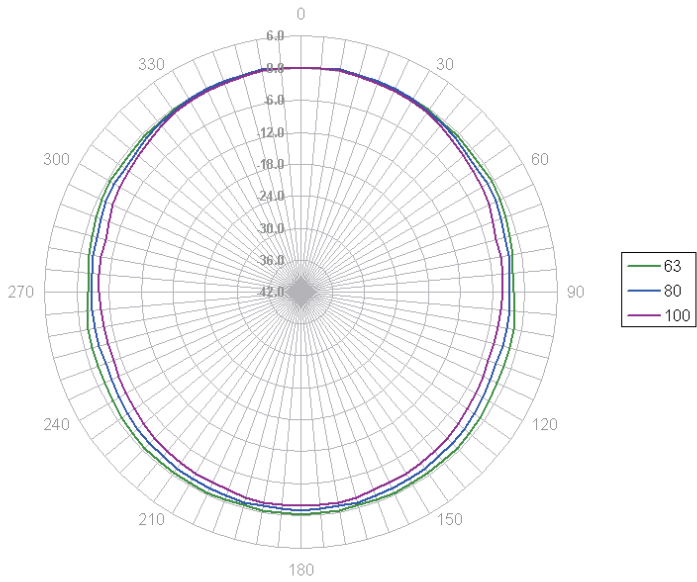


# directivity diagrams

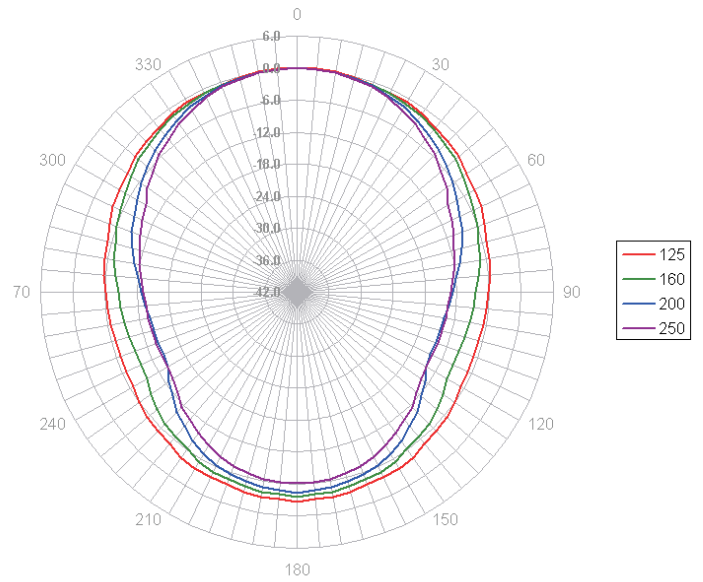
## Y-10



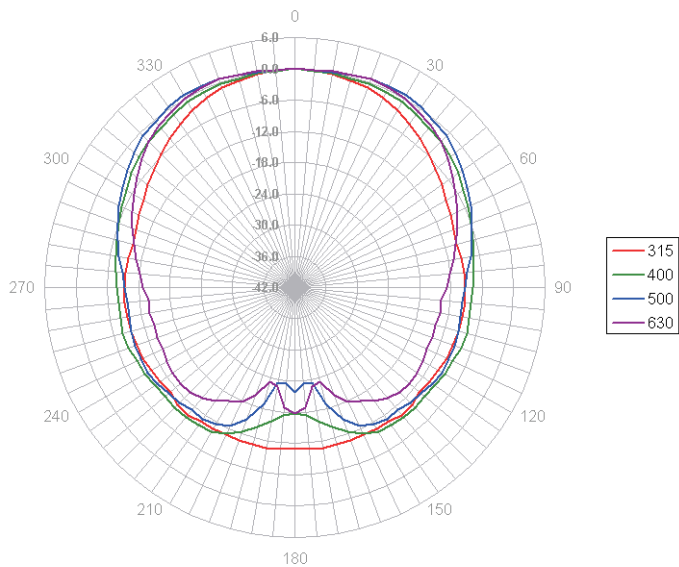
Polar plots 50 - 100 Hz ; 6 dB/div



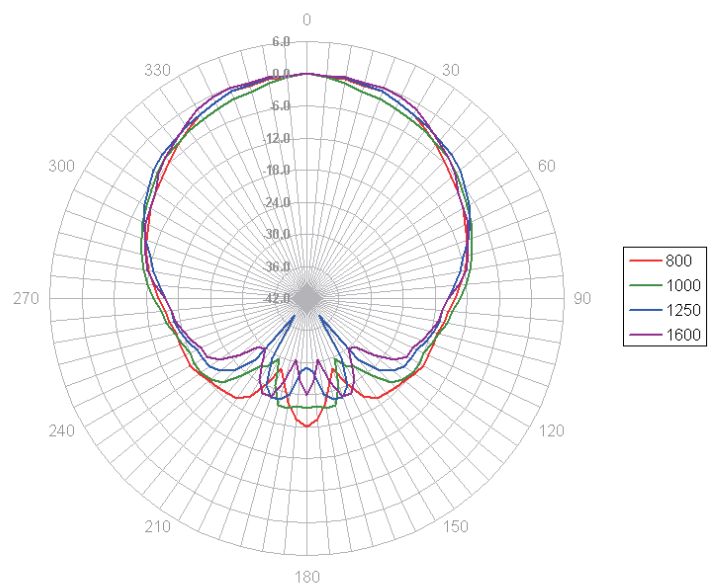
Polar plots 125 - 250 Hz ; 6 dB/div



Polar plots 315 - 630 Hz ; 6 dB/div



Polar plots 800 Hz - 1K6 ; 6 dB/div

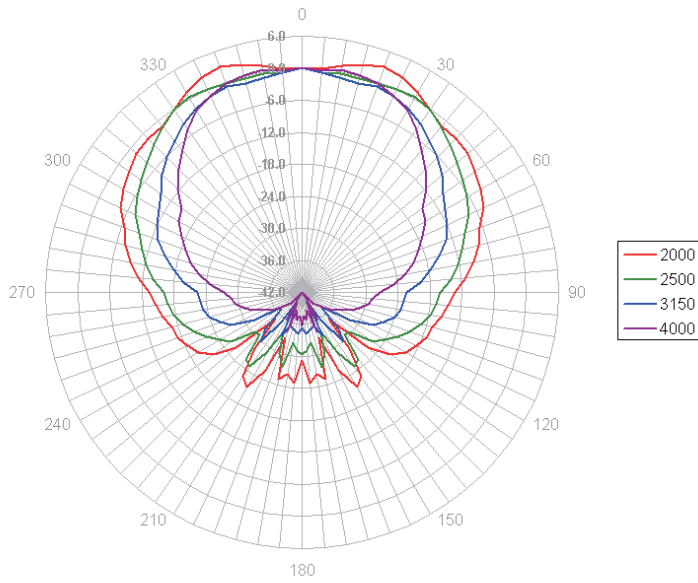


# directivity diagrams

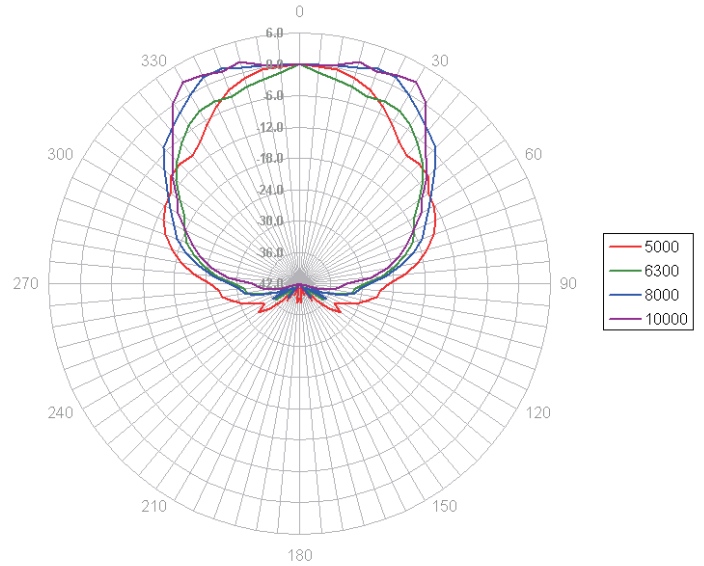
## Y-10



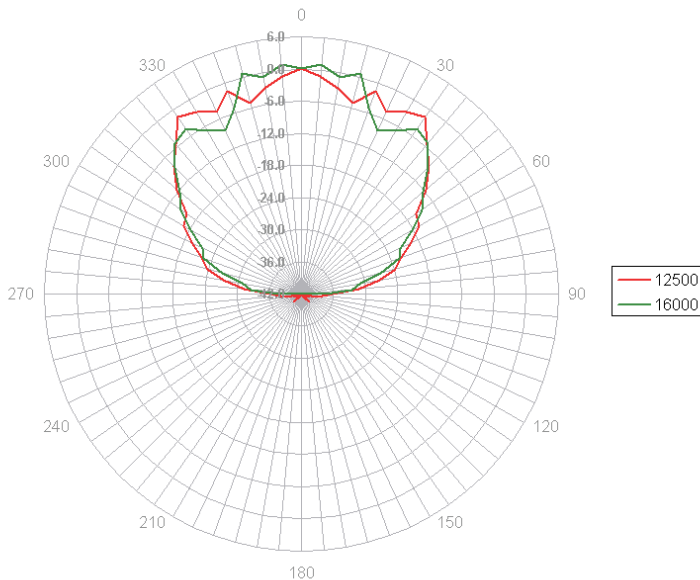
Polar plots 2K - 4K ; 6 dB/div



Polar plots 5K - 10K ; 6 dB/div



Polar plots 12K5 - 16K ; 6 dB/div

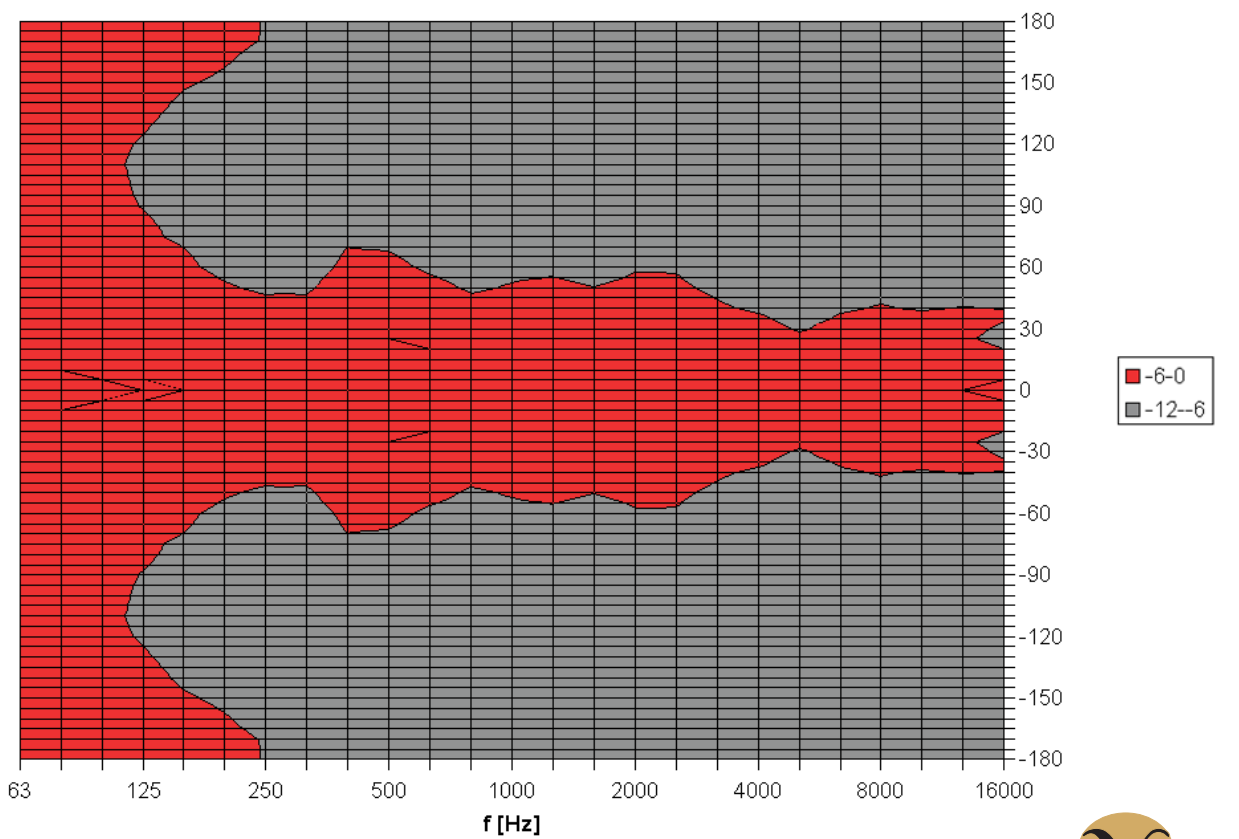
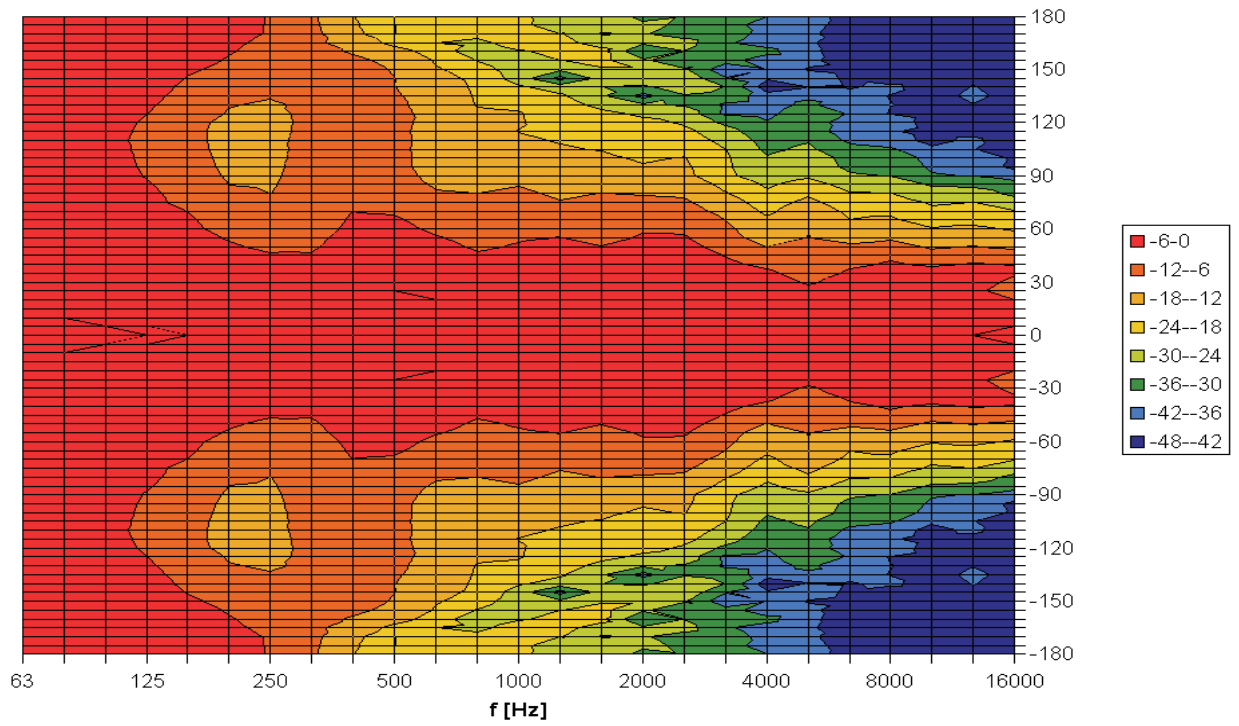


# directivity diagrams

## Y-10



2D Directivity Plot



• horizontal directivity - single enclosure measurement.